



PRS-7T Bench Mount Trimmer Stand

Park Tool Co. 5115 Hadley Ave. N., St. Paul, MN 55128 (USA) www.parktool.com

Assembly of the PRS-7T Bench Mount

Attach the bench mount weldment (ref. #16) to the workbench with washers, bolts, and nuts or with lag screws (not included). The open end of the universal top tube assembly (ref. #14) should face out into the work area. Proceed to the final assembly instructions.

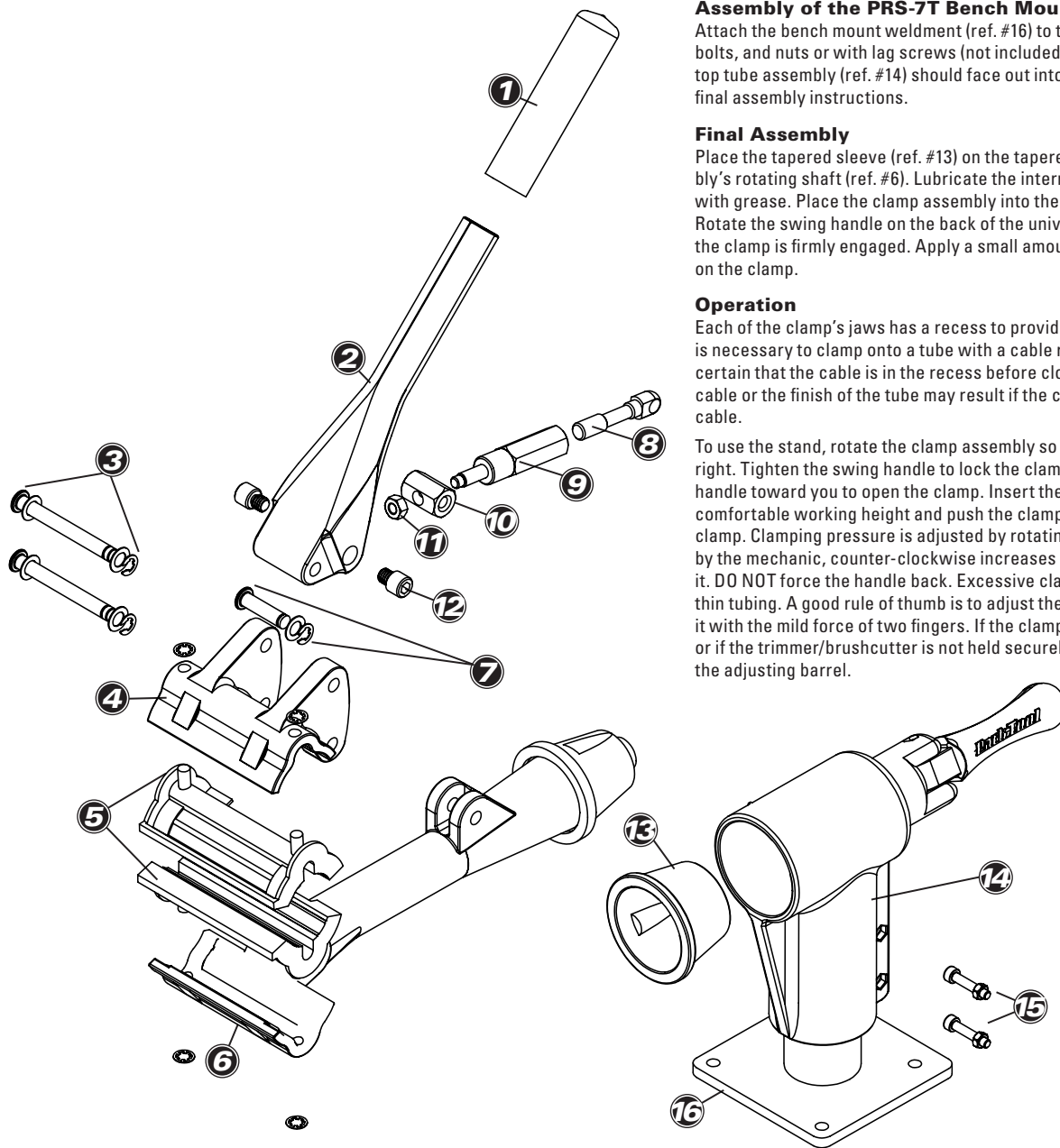
Final Assembly

Place the tapered sleeve (ref. #13) on the tapered portion of the clamp assembly's rotating shaft (ref. #6). Lubricate the internal threads of the rotating shaft with grease. Place the clamp assembly into the universal top tube assembly. Rotate the swing handle on the back of the universal top tube assembly until the clamp is firmly engaged. Apply a small amount of oil to all the pivot points on the clamp.

Operation

Each of the clamp's jaws has a recess to provide clearance for cables. If it is necessary to clamp onto a tube with a cable routed along the tube, make certain that the cable is in the recess before closing the clamp. Damage to the cable or the finish of the tube may result if the clamp surface closes on the cable.

To use the stand, rotate the clamp assembly so that the clamp handle is to your right. Tighten the swing handle to lock the clamp in position. Pull the clamp handle toward you to open the clamp. Insert the trimmer or brushcutter at a comfortable working height and push the clamping handle back to close the clamp. Clamping pressure is adjusted by rotating the adjusting barrel. As seen by the mechanic, counter-clockwise increases pressure, clockwise decreases it. DO NOT force the handle back. Excessive clamping pressure can damage thin tubing. A good rule of thumb is to adjust the clamp so it is possible to close it with the mild force of two fingers. If the clamping handle is difficult to close or if the trimmer/brushcutter is not held securely, open the clamp and adjust the adjusting barrel.



PRS-7T part numbers

Part No.	Description	Qty.
① 138	Handle Grip	1
② 103S	Handle	1
③ 107S-2	Pin with Washers and Circlips (see note)	2
④ 101-3	Moveable Jaw	1
⑤ 469	Jaw Cover Set (2), Includes Circlips	1
⑥ 102-5	Rotating Shaft	1
⑦ 108S-2	Pin with Washers and Circlips (see note)	1
⑧ 117S-1	Eyebolt	1
⑨ 118S	Adjusting Barrel	1

Part No.	Description	Qty.
⑩ 121S	Adjusting Barrel Pivot	1
⑪ 136	Nut, 1/4 - 28	2
⑫ 122S	Linkage Assembly (Items 8 through 11)	
⑬ 116S	Cap Screw	2
⑭ 149	Tapered Sleeve	1
⑮ 939C	Universal Top Tube Assembly	1
⑯ 943-1/944	M5 x 25 Socket Head Cap Screw w/ 5mm nut	2
⑰ 195R	Bench Mount Weldment	1

NOTE: Washers should be used as required to account for variations in casting taper.