



# PRS-4WT Deluxe Wall Mount Trimmer Repair Stand

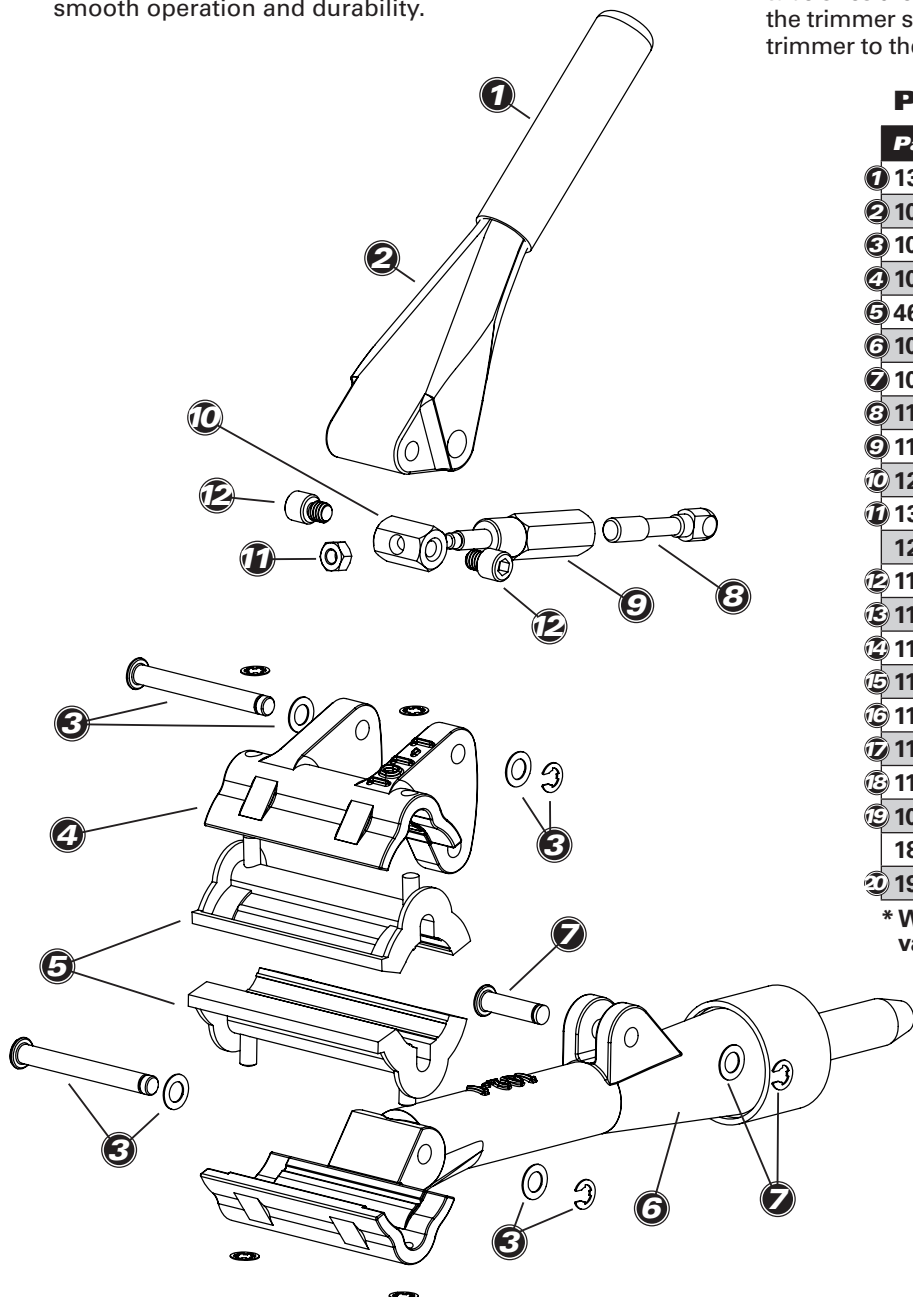
Park Tool Co. 5115 Hadley Ave. N., St. Paul, MN 55128 (USA) www.parktool.com

## Assembly and Maintenance

1. Attach wall mount support tube to wall stud or post using 7/16" bolts, nuts, and washers, or 7/16" lagbolts (not included).
2. Insert the clamp assembly into the horizontal tube. If necessary, rotate the locking lever on the horizontal tube assembly one or two turns counter-clockwise to open the lock blocks. Rotate the locking lever clockwise to lock the clamp assembly in and to prevent it from rotating.
3. The clamp assembly is lubricated at the factory. An occasional oiling of its pivot points and a thin layer of grease applied to the threads of the eye bolt will assure smooth operation and durability.

## Operation

To use the stand, rotate the clamp assembly so that the handle is to your right. Tighten the locking lever on the horizontal tube. Pull the clamp handle toward you to open the clamp. Clamping pressure is adjusted by rotating the adjusting barrel. Counter-clockwise increases pressure, clockwise decreases it. Push the clamping handle back to clamp the trimmer securely. DO NOT force the handle back. Excessive clamping pressure can damage tubing. If the clamping handle is difficult to close, open the clamp and adjust the adjusting barrel. A locknut is provided to lock in the adjustment if only one size of tube is normally clamped. Rotate the locknut fully clockwise to permit easy adjustment if different tube sizes are likely to be clamped. Push the handle back to clamp the trimmer securely. Loosen the positioning knob to rotate the trimmer to the best position for servicing.



## PRS-4WT part numbers

Part No.	Description	Qty.
1	Handle Grip	1
2	Handle	1
3	Pin with Washers and Circlips*	2
4	Moveable Jaw	1
5	Jaw Cover Set (2), incl. Circlips	1
6	Rotating Shaft	1
7	Pin with Washers and Circlips*	1
8	Eyebolt	1
9	Adjusting Barrel	1
10	Adjusting Barrel Pivot	1
11	Nut	1
122S	Linkage Assy. (items 8 - 11)	
12	Cap Screw	2
13	Threaded Lock Block	1
14	Spring	1
15	Unthreaded Lock Block	1
16	Lock Block Bolt Assy.	1
17	Ball Knob	1
18	Handle	1
19	Spring Pin	1
180	Lock Block Assy. (items 13 - 19)	
20	Wallmount Weldment	1

\* Washers should be used as required to account for variations in casting taper.

